

# Bridge Rectifier

## **KBU8B**

100V / 8A

# DATASHEET

from

[www.web-bcs.com](http://www.web-bcs.com)

OEM – General Semiconductor

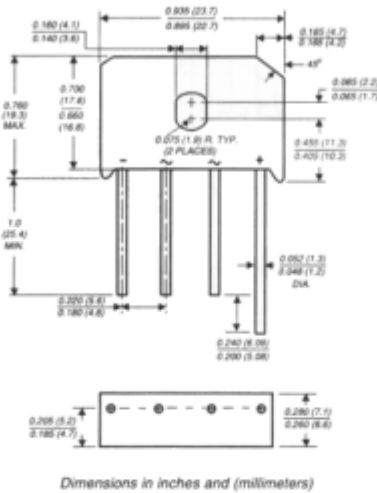
Source: General Semiconductor Databook 1998

# KBU8A THRU KBU8M

## SINGLE-PHASE BRIDGE RECTIFIER

Reverse Voltage - 50 to 1000 Volts Forward Current - 8.0 Amperes

Case Style KBU



### FEATURES

- ◆ Plastic material used carries Underwriters Laboratory Flammability Classification 94V-0
- ◆ This series is UL listed under Recognized Component Index, file number E54214
- ◆ High case dielectric strength of 1500 VRMS
- ◆ Ideal for printed circuit boards
- ◆ High forward surge current capability
- ◆ High temperature soldering guaranteed: 250°C/10 seconds, 0.375" (9.5mm) lead length, 5lbs. (2.3 kg) tension

### MECHANICAL DATA

**Case:** Molded plastic body

**Terminals:** Plated leads solderable per MIL-STD-750, Method 2026

**Mounting Position:** Any (NOTE 1)

**Mounting Torque:** 5 in.-lb. max.

**Weight:** 0.3 ounce, 8.0 grams

### MAXIMUM RATINGS AND ELECTRICAL CHARACTERISTICS

Ratings at 25°C ambient temperature unless otherwise specified.

	SYMBOLS	KBU 8A	KBU 8B	KBU 8D	KBU 8G	KBU 8J	KBU 8K	KBU 8M	UNITS	
Maximum repetitive peak reverse voltage	VRRM	50	100	200	400	600	800	1000	Volts	
Maximum RMS voltage	VRMS	35	70	140	280	420	560	700	Volts	
Maximum DC blocking voltage	VDC	50	100	200	400	600	800	1000	Volts	
Maximum average forward rectified output current at TC=100°C (NOTE 1, 3) TA=45°C (NOTE 2)	IAV	8.0						6.0		Amps
Peak forward surge current single half sine-wave superimposed on rated load (JEDEC Method) TJ=150°C	IFSM	300.0								Amps
Maximum instantaneous forward voltage drop per leg at 8.0A	VF	1.0								Volts
Maximum DC reverse current at rated DC blocking voltage per leg TA=25°C TA=125°C	IR	10.0						1.0		µA mA
Typical thermal resistance per leg (NOTE 2) (NOTE 3)	REJA REJC	18.0						3.0		°C/W
Operating junction and storage temperature range	TJ, TSTG	-50 to +150								°C

**NOTES:**

- (1) Recommended mounting position is to bolt down on heatsink with silicone thermal compound for maximum heat transfer with #6 screw
- (2) Units mounted in free air, no heatsink, P.C.B. at 0.375" (9.5mm) lead length with 0.5 x 0.5" (12 x 12mm) copper pads
- (3) Units mounted on a 3.0 x 3.0" x 0.11" thick (7.5 x 7.5 x 0.3cm) Al. Plate heatsink

**RATINGS AND CHARACTERISTICS CURVES KBU8A THRU KBU8M**

